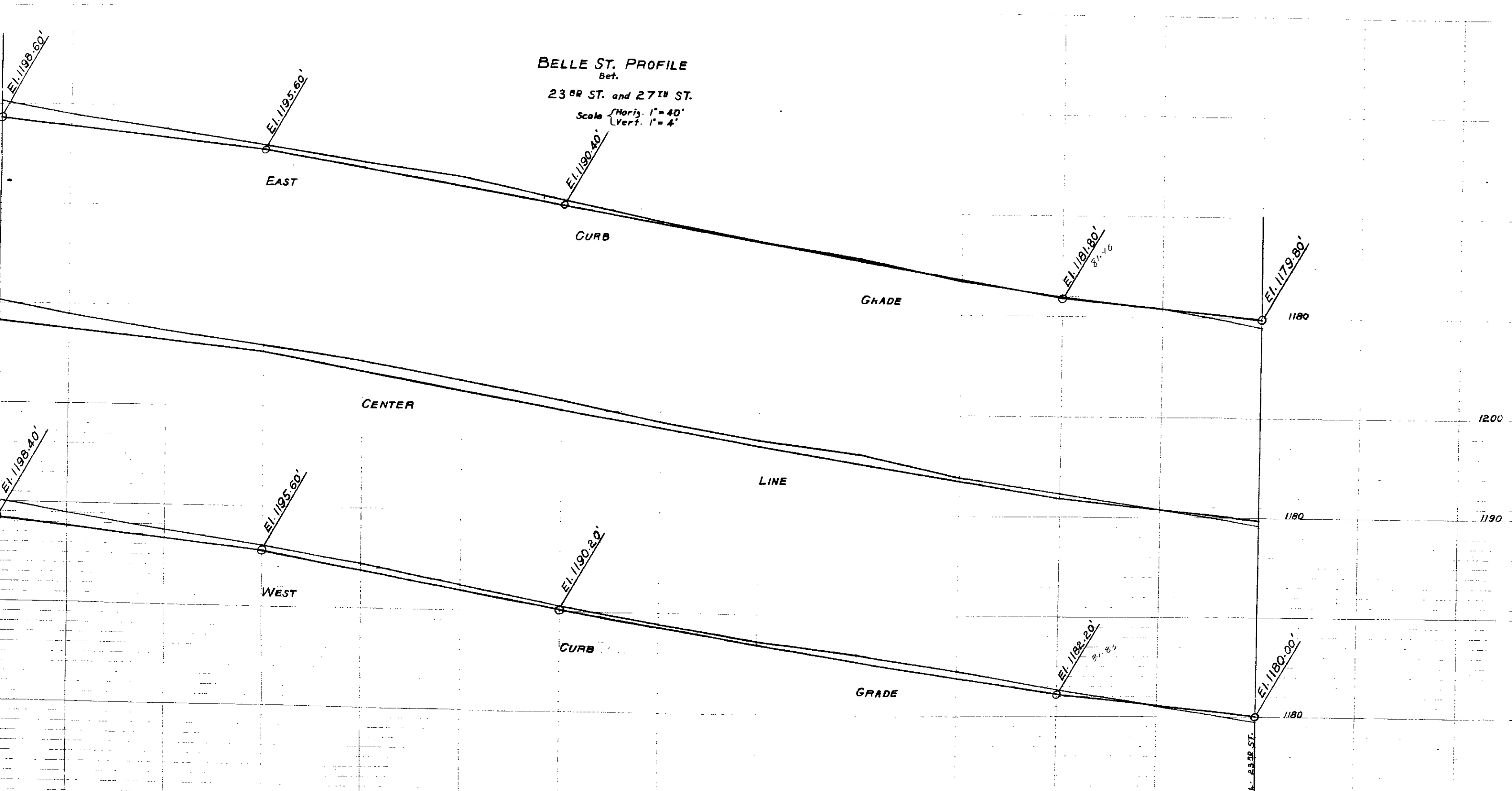


BELLE ST. PROFILE

Bet.
23RD ST. and 27TH ST.

Scale $\left\{ \begin{array}{l} \text{Horiz. } 1" = 40' \\ \text{Vert. } 1" = 4' \end{array} \right.$



BELLE ST. PROFILE

Bet.
23RD ST. and 27TH ST.

Scale { Horiz. 1" = 40'
Vert. 1" = 4'

